

HOSS



THE SPRING ISSUE

Deck Dude Paul Lafrance on building his success

SELLING YOUR HOME?
SCOTT MCGILLIVRAY'S
4 WAYS TO PREP

GIVE YOUR HOME A
MILLION DOLLAR
FACELIFT FOR PENNIES

HOTTEST NEW
HOME TECH
PRODUCTS

THE GREAT
GARAGE
MAKEOVER

MAR/APR 2016

\$4.99



7 252 74 806 45 4

WWW.HOSSMAGAZINE.COM

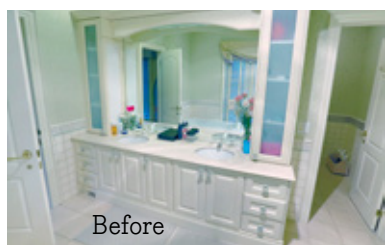


Pretty Elegant

By Designer Melissa Davis
Room Design by Melissa Davis

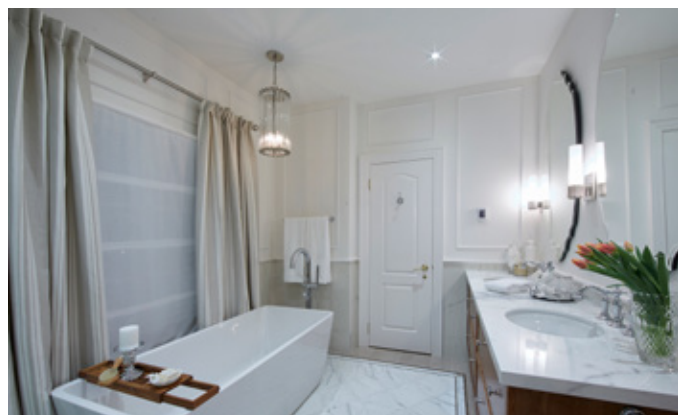
When I was asked to design this “Jack and Jill” style bathroom that sits between two teen girls’ rooms, I came in with notebook poised, ready for my marching orders. Instead, the homeowners said the words designers long to hear: “Please design it however you see fit.”

Once the pixie dust settled, I did, of course, ask why they were updating it to begin with. The room was just too girly. The couple’s daughters were now young women, and ready for a more sophisticated space. And, hopefully one that would be gender neutral and not deter a family with boys, should the family decide to sell the home sometime down the road.





Custom cut floor tiles stay toasty warm with infloor heating by Nuheat.



"This is a traditional home, so I didn't want a complete departure from the overall style."

FRESH, WARM WHITES

The overall design I settled on is a creamy, fresh palette of warm whites, with touches of caramel and warm woods. This is a traditional home, so although modernized, I didn't want a complete departure from the overall style.

I decided to maintain the room's layout, which was generous with a separate water closet, swapping out the traditional deck-mounted tub, for a more streamlined freestanding style from American Standard.

Removing the old tub deck also revealed to the construction crew, Candu Group, a chilly surprise. The floor area fell above the front porch and was uninsulated. Don Edmondson from Candu Group resolved the insulation issue and was quick to offer a terrific solution that allowed us to eliminate the old heat vent in that area. Installing in-floor heating from Nuheat means the floor is now perfectly toasty underfoot.

TILED MOSAICS

All the beautiful tile in the space is from Ciot Tile. The centre of the floor inserts are custom-cut marble in an arabesque shape with an arrow pattern mosaic and linear mosaic in a light caramel brown as a border. Finding a tiler with the skill and patience to complete these intricate patterns is no small feat and Candu delivered on both counts.

For the shower walls and lower perimeter of the room, I selected 1/8" thick Maxfine porcelain tiles from Ciot. They perfectly emulate natural stone and offer the benefits of lightweight installation, durability and consistency.

Carpenter Chris Palmer skillfully crafted the custom vanity I designed, with oversized drawers and pretty pulls from Lee Valley Tools. I topped the vanity with the Maxfine porcelain in slab form. It matches the walls perfectly, but will never stain the way a real stone counter would.

FINISHING TOUCHES

The faucets, as with all the plumbing fixtures, are a beautiful slender design from American Standard, perfectly bridging classic details with more modern lines. The sconces and pendants from Royal Lighting add a gorgeous sparkle in the same polished finish as the fixtures.

I added a simple trim (painted out a creamy white) on all the walls. A few other finishing touches included the elongated scalloped mirrors from Renwil, and the gorgeous custom drapery—a combination of a sheer Roman shade and simple linen stripe panels both from Robert Allen Fabrics.

The resulting room is crisp and cozy, with a timeless elegance. Not all homeowners are brave enough to give up creative control, nor do I expect it, but it was definitely a lot of fun and so rewarding to see how happy they were with this result. **-H**

Please see page 20 for product references



DOUBLE DESIGN RESOURCE

MASTERBATH RESOURCE LIST:

Sophisticated Master bathroom, pages 16, 17

CIOT (MONTREAL): TOILET, TAPS, PLUMBING AND TILES (ONICE ORO BY MAXFINE)

CANDU GROUP: CONTRACTOR

CROWN WALLPAPER: CARLTON BY CARL ROBINSON, EDITION 3 SPECIALTY PAPERS

FLEX DEPOT: VOLCANIC STONE TUB

NUHEAT: INFLOOR HEATING

RESTORATION HARDWARE: CHANDELIER

NORTESCO: IBUTLER STEAM SHOWER

JACK AND JILL BATH RESOURCE LIST:

PRETTY ELEGANT BATHROOM. PAGES 18, 19

AMERICAN STANDARD: BATHTUB FAUCETS

CIOT (TORONTO): ARABESQUE TILES

CIOT (MONTREAL) MAXFINE PORCELAIN TILES

CANDU GROUP: CONTRACTOR

CUSTOM VANITY: CHRIS PALMER CARPENTER

NUHEAT: INFLOOR HEATING

RENWILL: MIRRORS

SCONCES AND PENDANTS: ROYAL LIGHTING