



Let The Sunshine In

WRITTEN BY LINDA MAZUR

Maximum light in the home is the goal of many people. Not only does this enhance the aesthetics of your space, but it also makes you feel better to see the great morning sunshine. However, we all have those areas of our home – the space over our staircase or a bathroom perhaps – where light struggles to reach. If this is the situation you are encountering, then consider adding a skylight to these darker areas of your home to let the sunshine in.

Skylights, or solar tubes if you lack the space, are a wonderful way to increase the brightness and even the health of your home. It allows you to introduce more natural light into a room and helps your home to ventilate and “breathe” better. Windows are designed to circulate air throughout a room; however hot air rises and with it any toxins or pollutants. There are many skylights on the

market now that are designed to pop open and allow your home to breathe better.

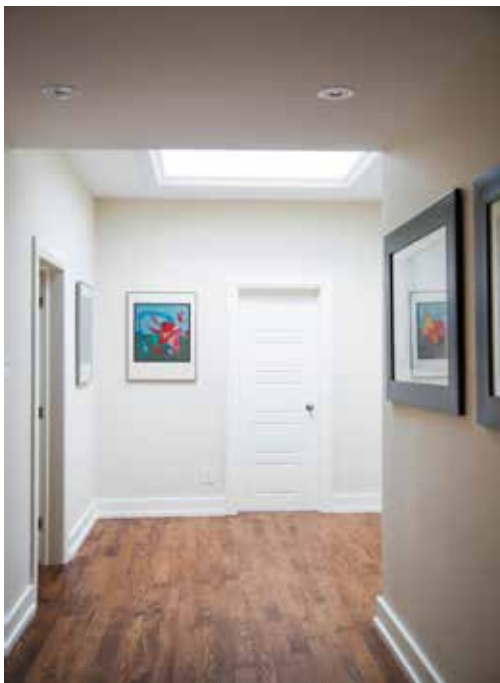
As a designer, one company that I turn to for all of the skylights and solar tubes we install is **Velux Canada**. **Velux** manufactures quality products and are at the forefront of the industry with great designs and technology.

In order to maximize the benefits and design feature of a skylight in your home, you need to remember a few key points when deciding the best place to install one...or two...

1 Plan well and be aware of the finished outcome of installing a skylight or solar tube. You need to remember that a skylight is not a window, though some often think the two are interchangeable. A window is designed to catch the low-angled rays of the sun in the winter and limits the glare of the high-angled sun in the summer. On the other hand, a skylight tends to do the opposite so consider this factor when deciding on the location.

2 Consider how the sun moves throughout the day in your area. A skylight positioned on a sloping roof facing north tends to diffuse light





for you all day, whereas one situated on a sloping roof facing south can have a tendency to over-heat rooms. Also remember that any furniture, flooring or fabrics may become sun bleached from constant direct sunlight. To regulate this you may want to consider a skylight that has a built-in blind to preserve your finishes.

3 Select appropriately for your space to maximize the aesthetics. Just as a large skylight in a very small bathroom can look out of place, so will a single small skylight on a vast sloping ceiling in a large family room or kitchen. Skylights come in varying sizes; therefore, if you have a large ceiling you may want to consider adding more than one skylight for visual appeal. However, for more confined spaces the solar tube should be considered as an option.

In the end, regardless of what you decide I am sure we can agree that skylights are a wonderful design feature for many spaces. They add an architectural element to your room while creating a more airy feeling as the ceiling no longer appears as an uninteresting solid block. So create a warm and cheery atmosphere for yourself and consider the addition of a skylight as part of your next home renovation!



Linda Mazur IS THE PRINCIPAL DESIGNER OF LINDA MAZUR DESIGN GROUP.

With over a decade of experience this sought out multi-disciplinary interior design firm is known for providing innovative interior renovations and full scale build projects that reflect both timeless style and optimal functionality. The firm services Toronto, the GTA and surrounding areas.

www.lindamazurdesign.com @LindaMazur Group

